

L2P 2013 External Systems

Marius Politze

■ Flexible integration of new systems

- Easy to extend
- Easy to add new systems

■ Single Sign On

- User should not need to sign in after already signed in to L²P

■ Allow Communication between L²P and external systems

- Get context information from L²P (course room, role)
- Two way communication to write back information (later!)

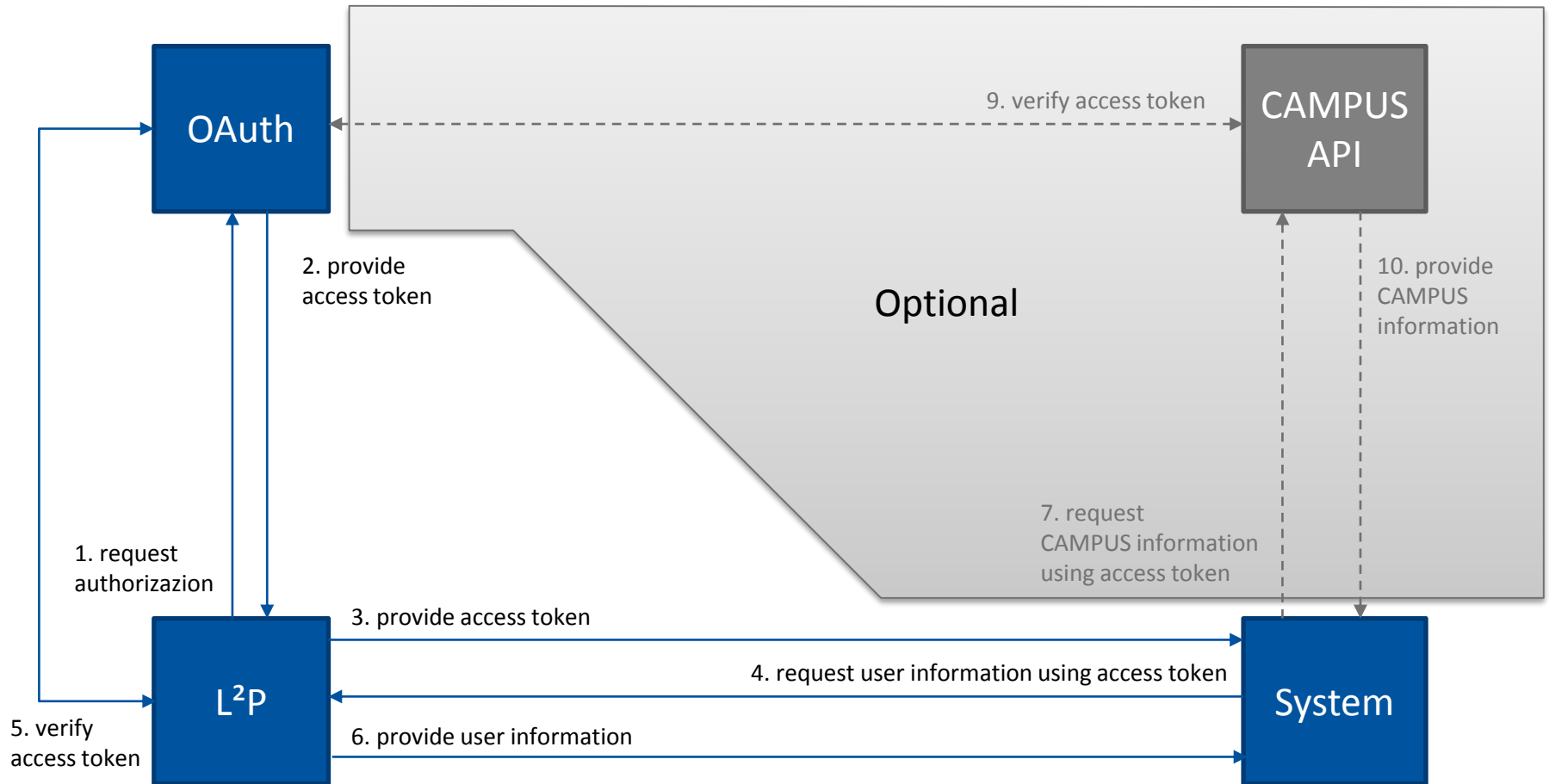
■ Protect User Data

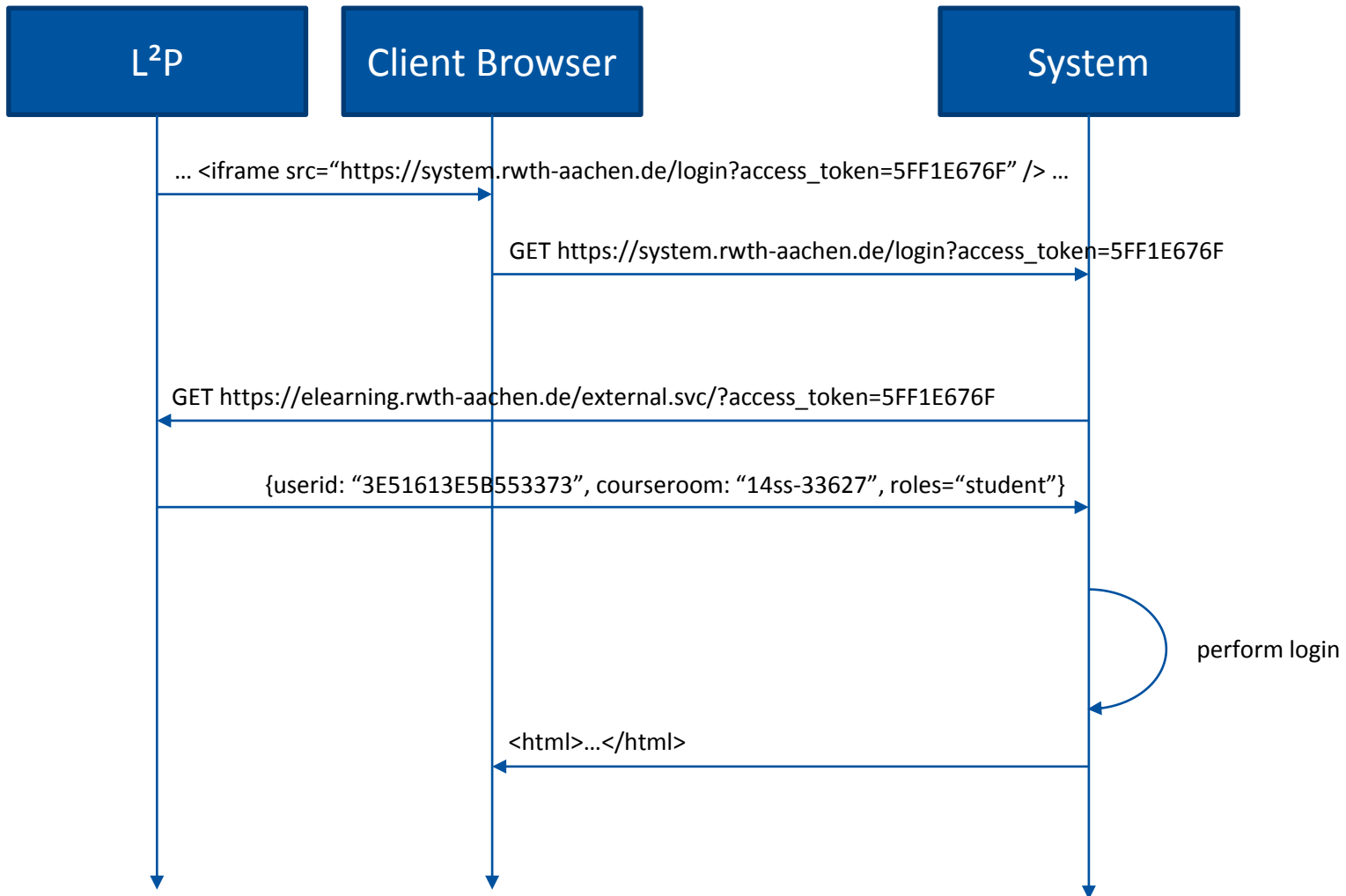
- Only provide data needed by the system
- Additional data can be provided when DPO agrees

- **External systems are presented in an iFrame**
 - “seamless” integration to L²P

- **L²P provides an access token (ticket) as a GET parameter to the system**
 - System needs to provide a URL template

- **The system can validate the access token and get user information**
 - System dependent user id, unique per user and system
 - Course room id
 - Role of user in course room (student, tutor, manager)





- <https://demo5.elearning.rwth-aachen.de...>

- <https://demo2.elearning.rwth-aachen.de...>

- <https://www3.elearning.rwth-aachen.de...>

- Abfrage der Benutzerinformationen:

- `/_vti_bin/l2pservices/externalapi.svc/context?token={accesstoken}`

- Dokumentation

- `/_vti_bin/l2pservices/externalapi.svc/documentation`

- iFrame Höhenanpassung

- `/_layouts/15/l2pexternal/resizeme.js`